



# Croeso Welcome



**Gwireddu breuddwydion  
Empowering dreams**

# Beth i ddisgwyl ar fy'n niwrnod cyntaf?

## What to expect on my first day?



- Disgyblion blwyddyn 7 i gwrdd yn y neuadd am 9 o'r gloch
  - Bydd angen bagiau ysgol gyda'r offer priodol (sleid 9) a'r wisg ysgol lawn (sleid 10 ac 11)
  - Bydd disgyblion blwyddyn 7 yn cael eu rhannu i'w dosbarthiadau cofrestru
  - Yma bydd y disgyblion yn cwrdd â'r tiwtor dosbarth ac yn derbyn yr amserlen ysgol
  - Bydd gwybodaeth bwysig yn cael eu rhannu e.e. sut i ddefnyddio'r llyfr cyswllt
  - Bydd y disgyblion yn cael y cyfle i ddod i adnabod ei gilydd yn well
  - Ar ddiwedd cyfnod cofrestru bydd y tiwtor dosbarth yn eu hebrwng i'r wers gyntaf
- 
- *Year 7 pupils to meet in the hall at 9 o'clock*
  - *They will need their bags with all the necessary equipment (slide 9) and wear their full school uniform (slide 10 and 11)*
  - *Year 7 pupils will be informed of their registration classes*
  - *Here pupils will meet their registration teacher and given their school timetable*
  - *They will also receive important information e.g. how the contact book works*
  - *Pupils will get the opportunity to get to know each other better*
  - *At the end of the registration period the registration teacher will guide the pupils to their first lesson*

# Trefn y dydd

## *The school day*



9:00 – 9:20	Cofrestru – Tasgau rhif a darllen / <i>Registration – Numeracy and reading tasks</i>
9:20 – 10:10	Gwers 1 / <i>lesson 1</i>
10:10 – 11:00	Gwers 2 / <i>lesson 2</i>
11:00 – 11:20	Egwyl / <i>Break</i>
11:20 – 12:10	Gwers 3 / <i>lesson 3</i>
12:10 – 1:00	Gwers 4 / <i>lesson 4</i>
1:00 – 1:45	Cinio / <i>Lunch</i>
1:45 – 2:35	Gwers 5 / <i>lesson 5</i>
2:35 – 3:25	Gwers 6 / <i>lesson 6</i>
3:25 – 4:30	Clwb gwaith cartref / <i>Homework club</i>



# Presenoldeb



Mae astudiaethau'n dangos yn glir bod cysylltiad cryf rhwng presenoldeb da yn yr ysgol a llwyddiant academaidd. Mae gwella presenoldeb yn brif flaenoriaeth i ni eleni.

Er ein bod yn deall bod angen i ddisgyblion gollu ysgol weithiau am resymau dilys megis salwch, rydym hefyd yn ymwybodol bod rhai achosion o absenoldeb yn gallu cael eu hosgoi – er enghraifft, oherwydd ffraeo gyda ffrindiau, osgoi gwersi penodol, neu weithiau esgus bod yn sâl.

Os oes gennych unrhyw bryderon, neu os ydych yn amau bod eich plentyn yn osgoi'r ysgol am resymau tebyg, cysylltwch â ni os gwelwch yn dda. Rydym yma i gefnogi chi a'ch plentyn i fynd i'r afael ag unrhyw broblemau sy'n effeithio ar eu presenoldeb.

Hoffem hefyd atgoffa rhieni a gofalwyr **i beidio â threfnu gwyliau yn ystod tymor yr ysgol**. Mae **Cyngor Sir Powys wedi ailgychwyn rhoi Hysbysiadau Cosb Benodedig** mewn achosion o absenoldeb heb awdurdod, yn enwedig lle mae presenoldeb yn peri pryder.

# Attendance



Studies consistently show a clear link between good school attendance and academic success. Improving attendance is a key priority for us this year.

While we understand that pupils sometimes need to miss school for genuine reasons such as illness, we are also aware that some absences are avoidable—for example, due to falling out with friends, avoiding particular lessons, or occasionally pretending to be unwell.

If you have any concerns or suspect that your child may be avoiding school for reasons such as these, please get in touch with us. We are here to support both you and your child in overcoming any issues affecting attendance.

We would also like to remind parents and carers not to book holidays during term time. **Powys County Council has recently resumed issuing Fixed Penalty Notices** in cases of unauthorised absence, particularly where attendance is a concern.

# Arweinwyr Blwyddyn 7

## Year 7 Leaders



Pennaeth blwyddyn 7  
Head of year 7



Mrs Eleri Wyn

[wyne19@hwbcymru.net](mailto:wyne19@hwbcymru.net)

Arweinydd anghenion dysgu a lles  
Additional Learning needs and wellbeing leader



Mrs Angharad Elias

[eliasa18@hwbcymru.net](mailto:eliasa18@hwbcymru.net)

# Cofrestru *Registration*



9:00yb - 9:20yb  
9:00am - 9:20am

Llun / Monday	Mawrth/ Tuesday	Mercher/ Wednesday	Iau / Thursday	Gwener/ Friday
Gwasanaeth / Assembly	Bore rhif Numeracy morning	Thema'r wythnos / Theme of the week	Bore darllen / Reading morning	Gwasanaeth / Assembly



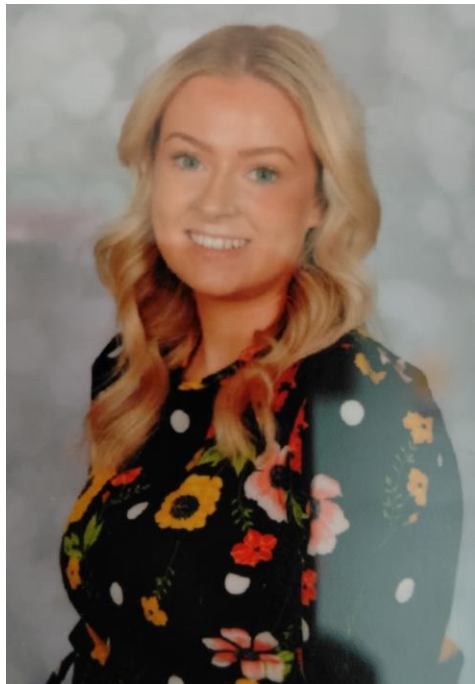
**Gwireddu breuddwydion**  
*Empowering dreams*

# Tiwtoriaid blwyddyn 7

## *Year 7 Tutors*



Miss Ffion Pennant  
7 Cegir



Mrs Eirian Davies  
7 Delyn



# Offer *Equipment*



**Gwireddu breuddwydion**  
*Empowering dreams*

# Y wisg ysgol

## *The school uniform*



Fel ysgol rydym yn dangos llawer o falchder yn ein gwisg ysgol a gyda rheolau llym

- Siwmpwr lwyd ysgol
- Crys gwyn
- Tei piws
- Trowsus du/Sgert
- Esgidiau du

*As a school we take pride in our uniform and have strict rules*

- *Grey school jumper*
- *White shirt*
- *Purple tie*
- *Black trousers/Skirt*
- *Black shoes*



**Gwireddu breuddwydion**  
*Empowering dreams*

# Y wisg ysgol

## *The school uniform*



### Gwisg chwaraeon

- Crys chwaraeon ysgol
- Siorts du
- Trainers a esgidiau pel droed

### Sports kit

- *The school PE shirt*
- *Black shorts*
- *Trainers and football boots*



Archebu gwisg ysgol / *Purchase school uniform*

[Constructiv Clothing](#)



**Gwireddu breuddwydion**  
***Empowering dreams***

# Ein disgwyladau

## Our expectations



- Disgyblion i gyrraedd yr ysgol ar amser (9yb)
- Disgyblion i ymddwyn yn dda pob amser
- Bod yn garedig gydag eraill pob amser
- I weithio'n galed ym mhob gwers, chyflawni gwaith cartref o safon uchel a'i gyflwyno ar amser
- Ni chaniateir ffonau symudol yn yr ysgol oni bai eu bod yn cael ei roi yn y swyddfa ar ddechrau'r dydd
- I ofyn am gymorth a rhoi gwybod i athro/athrawes yn syth os oes problem

Gofynnir yn garedig i rieni gefnogi'r ysgol i sicrhau bod ein disgwyladau yn cael ei gwrdd

- Pupils to arrive to school on time (9am)
- Pupils to behave well at all times
- Be kind to others at all times
- To work hard in every lesson, complete homework to a high standard and present homework on time
- Mobile phones are not allowed in school unless they are handed in at the office at the beginning of the day
- To ask a teacher for help and let us know as soon as possible if there's a problem

Parents are asked to support the school to ensure that our expectations are being met

# Ymweliadau Ysgol

## *School Visits*



**Trip Mathemateg i Efrog Newydd**  
*Maths trip to New York*



**Trip Daeryddiaeth i Wlad yr Iâ**  
*Geography trip to Iceland*



**Trip i'r Almaen a'r Weriniaeth Tsiec**  
*Germany and Czech Republic visit*



**Sgio / Skiing**  
**Barcelona**  
**Hay Festival**  
**Eisteddfod**  
**CAT**  
**Ganllyn**  
**Llangrannog**

**A llawer mwy...**  
**And many more...**

# Gwaith Cartref Homework



Beth gall eich **rhieni** ei wneud i'ch helpu gyda cwblhau gwaith cartref ar amser ac i safon uchel?

*What could your **parents** do to help you complete homework on time and to a high standard?*

Dyma ganlyniadau llais y disgybl o sut gall rhieni helpu  
Here are the results of pupils voice on how parents can help

Beth fyddwch **chi'n** gallu ei wneud i helpu'ch hun gyda cwblhau gwaith cartref ar amser ac i safon uchel?

*What could **you** do to help yourself complete homework on time and to a high standard?*

Stopio i ddefnyddio gemau cyfrifiadur/ffon i tecstio/Facebook tra yn gweithio Stop me using computer games/mobile/Facebook when working	20
Nagio! Nag!	14
Dim byd Nothing	0
Llai o bwysau Less pressure	13
Mwy o amser i wneud gwaith cartref adref More time to do homework at home	13
Prynu llyfrau i helpu efo'r gwaith cartref Buy books to help me with my homework	19
Edrych dros fy'n nghwath cartref Look over my homework	32
Eistedd wrth fy ymyl pan dwi'n gwneud gwaith cartref Sit by my side when I'm doing my homework	16
Edrych ar fy llyfr cyswllt Look at my contact book	32

Canolbwyntio Concentrate	32
Rhoi 100% pob tro Give a 100% every time	34
Cymryd mwy o amser i wneud y gwaith cartref (peidio rhythro) Take more time doing the homework (no rushing)	27
Gofyn am gymorth Ask for help	25
Gwneud o'n gynharach Do it earlier	20
Gwneud defnydd o'r clwb gwaith cartref Make use of the homework club	25

- Mwyaf defnyddiol / Most helpful
- Eithaf defnyddiol / Some help
- Lleiaf defnyddiol / Least helpful



**Gwireddu breuddwydion**  
*Empowering dreams*

# Sut gall rieni helpu?

## *How can parents help?*



### Gall rieni helpu drwy

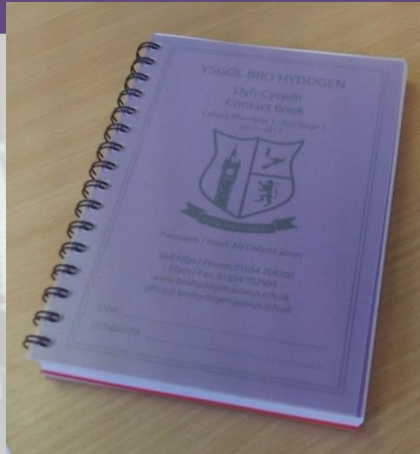
1. Sicrhau bod yna le tawel i weithio
2. Adnoddau cywir ar gael
3. Annog clwb gwaith cartref yr ysgol
4. Edrych dros y gwaith
5. Edrych yn y llyfr cyswllt
6. Gofyn cwestiynau am y tasgau
7. Helpu sefydlu trefn gartref
  - Sicrhau bod llyfrau ac offer yn y bag ac wrth y drws ffrynt yn barod y noson gynt
  - Gwneud gwaith cartref yn fuan ar ol ei dderbyn fel ei fod yn glir yn y meddwl a hefyd yn helpu i osgoi gormod o waith i'w wneud yr un pryd

### Parents can help by

1. Ensure there's a quiet area to work
2. Correct equipment are available
3. Encourage use of the school homework club
4. Check over the work
5. Check contact book
6. Ask questions about the tasks
7. Help set up a routine at home
  - Ensure that books and equipment are in the bag and ready by the front door the night before
  - Complete homework soon after receiving it as it's fresh in the mind and will help with overload of homework to complete

# Cyfathrebu ysgol ↔ cartref

# Home ↔ school communication



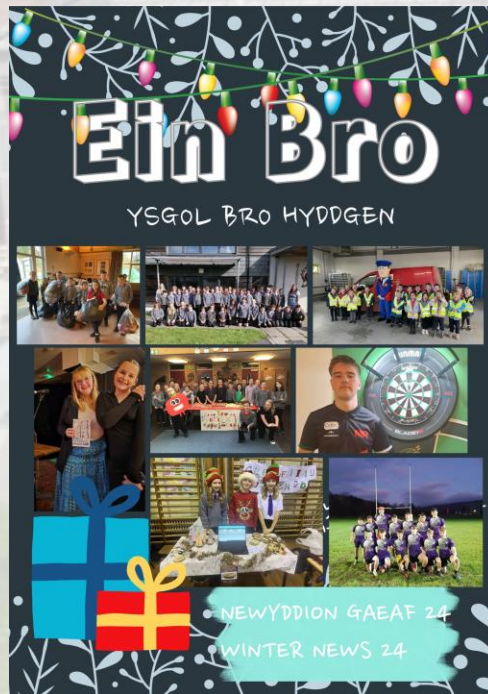
Llyfr cyswllt  
Contact book



Dilynwch ni / Follow us  
@brohyddgen



Noson rieni  
Parents evening



Ein Bro  
(papur newydd yr ysgol cydnabyddedig)  
(Our award winning school newspaper)



Classcharts

Tabl Agwedd at Ddysgu / Attitude to Learning Grid

Category	Not Meeting Expectations	Meeting Expectations	Exceeding Expectations	Exceeding Expectations	Exceeding Expectations
Engage in a discussion	Questions are unclear/guess. Works well in many lessons	Yes good	Yes well	Yes excellent	Yes excellent
Engage in class	Questions are unclear/guess. Works well in many lessons	Yes good	Yes well	Yes excellent	Yes excellent
Engage in a discussion	Questions are unclear/guess. Works well in many lessons	Yes good	Yes well	Yes excellent	Yes excellent
Engage in class	Questions are unclear/guess. Works well in many lessons	Yes good	Yes well	Yes excellent	Yes excellent
Engage in a discussion	Questions are unclear/guess. Works well in many lessons	Yes good	Yes well	Yes excellent	Yes excellent
Engage in class	Questions are unclear/guess. Works well in many lessons	Yes good	Yes well	Yes excellent	Yes excellent
Engage in a discussion	Questions are unclear/guess. Works well in many lessons	Yes good	Yes well	Yes excellent	Yes excellent
Engage in class	Questions are unclear/guess. Works well in many lessons	Yes good	Yes well	Yes excellent	Yes excellent
Engage in a discussion	Questions are unclear/guess. Works well in many lessons	Yes good	Yes well	Yes excellent	Yes excellent
Engage in class	Questions are unclear/guess. Works well in many lessons	Yes good	Yes well	Yes excellent	Yes excellent

YSGOL BRO HYDDGEN  
Adroddiad Blynnyddol/Annual Report

Yrwm Tutor: Mr Tegid Gwyn Owen

	Exceeding Expectations	Exceeding Expectations	Exceeding Expectations	Exceeding Expectations	Exceeding Expectations
Yrwm Tutor	✓	✓	✓	✓	✓
Yrwm Tutor	✓	✓	✓	✓	✓
Yrwm Tutor	✓	✓	✓	✓	✓
Yrwm Tutor	✓	✓	✓	✓	✓

Dosbarth/Form Tutor's Comments

I hapus lawn yma'n Ysgol Bro Hyddgen. Mae hi'n ffrich gyfariol iawn sydd ydy ym mhob un o'r pynciau dros y flwyddyn. Mae [ ] wedi ymuno i law ar allwyl o fewn yr ysgol a gysia diddarded mawr mewn gwneithgareddau [ ] wedi llwyddo i gael dros 271 o bwyntiau positif y flwyddyn hon am y dosbarth/cartref o'r helpu a'r awrion, cynrychioli'r ysgol ynghyd a 7 bagori sydd yn gamolodwy dros ben. Mae [ ] wedi dechrau i ymuno nwy am an achlysur o yrru rages destun a fewn gwerau. Dyfais [ ] gael ei "arwng" i'r ysgol agwedd bostif thug at ei gwaith a wellir y flwyddyn hon er mwyn parhau ar gynyddio ardderchog mae hi wedi ei wneud hyd yma. Da iawn [ ] a phob hysbys mwyddyn!

Sylwadau'r Arweinydd Cynnydd/Progress Leader's Comments

Adroddiadau  
Reports



Ffonio  
Phone

# Cwestiynau ac atebion

## Questions and answers



### **Sut rwy'n gwybod os yw fy mhlentyn yn gwneud yn dda yn yr ysgol?**

Gall rhieni dracio cynnydd eu plentyn gan ddefnyddio'r app 'Classcharts'. Bydd yr ysgol yn ffonio rhieni os oes problem ddifrifol. Bydd rhieni hefyd yn derbyn gwahoddiad i noson rieni, ac adroddiad llawn am gynnydd y plentyn yn ystod y flwyddyn

### ***How do I know my child is doing well in school?***

*Parents can track their child's progress using the 'Classcharts' app. The school will phone parents if there's a severe problem. Parents will also be invited to a parents evening and a report on your child progress throughout the year.*

### **Beth os yw fy mhlentyn yn mynd ar goll neu ddim yn siŵr beth i wneud?**

Ar ddechrau cyfnod eich plentyn yn yr Ysgol bydd disgyblion blwyddyn 7 presennol yn arwain eich plentyn o wers i wers fel bod nhw'n gwybod lle i fynd. Os oes gan eich plentyn unrhyw gwestiynau/pryderon mae'r staff yr ysgol yn fwy nag parod i helpu

### **What if my child gets lost or unsure of what to do?**

At the start of your child's time at the school the current year 7 pupils will guide your child from lesson to lesson so they know where to go. If your child has any questions/concerns the school staff are more than happy to help

# Cwestiynau ac atebion

## Questions and answers



### **Beth os yw fy mhlentyn yn sâl?**

Gofynnir i rieni cysylltu â'r swyddfa ysgol (01654 700202) cyn 9yb os yw eich plentyn yn rhy wael i ddod i'r ysgol. Os yw eich plentyn yn wael yn yr ysgol bydd yr ysgol yn cysylltu gyda rhieni. Targed presenoldeb yw 95%.

### ***What if my child is ill?***

*Parents are asked to contact the school office (01654 700202) before 9am if your child is too unwell to attend school. If your child becomes unwell in school the school will contact parents. The school attendance target is 95%.*

### **Beth sy'n digwydd amser egwyl/cinio a lle gall fy mhlentyn gadw bag ysgol?**

Gall eich plentyn archebu bwyd gan ddefnyddio ein system 'parent pay' (gofynir i chi gadw golwg ar faint o arian sydd nghyfrif eich plentyn) neu mae'n bosib i'ch plentyn dod a phhecyn bwyd. Ni chaniateir i unrhyw blentyn i fynd oddi ar dir yr ysgol oni bai bod rhieni wedi rhoi gwybod i'r ysgol o flaen llaw. Yn yr wythnos gyntaf mae'n bosib i'ch plentyn llogi locer i storio offer a bag

### ***What happens during break/lunch times and where can my child keep their bags?***

*Your child can purchase food using our parent pay system (please keep an eye on how much money is in your child's account) alternatively your child can bring a packed lunch. Pupils are not to leave the school grounds unless parents have informed the school beforehand. In the first week your child may hire a locker to store bags/equipment*



Os oes gennych unrhyw gwestiwn ebostiwnch / If you have any questions email

*ffoniwch/call 01654 700202*



**Gwireddu breuddwydion**  
*Empowering dreams*